

## ROOF CONSOLE DIRECTFIX 2-LAYER FROM JUAL SOLAR



### PRODUCTDESCRIPTION:

#### JUAL SOLAR ROOF CONSOLE DIRECTFIX FOR SAFE FIXATIONS ON FLAT ROOFS

The Roof Console DirectFix with two layers of bitumen has been developed based on market experiences and constructive customer feed back and is targeted for application onto flat roof surfaces with 2-layer bituminous roof coverings

#### APPLICATION AND LOAD CAPACITY:

The precondition for a correct application of the Roof Console DirectFix is that a qualified analysis is conducted of the various loads (wind, snow, cold -and heatness) which will impact each console through out the expected life time of the installation. It is crucial that the analysis focuses on the complete system and hereby including elements such as: The roof deck, the VCL, insulation thickness, etc. JUAL SOLAR recommends that the load design is performed by either system-suppliers, mounting system suppliers, solar contractors or consultancy engineers or architects and points out that JUAL SOLAR is available to assist in this process.

If Roof Consoles are used as a part of a complete solar installation where JUAL SOLAR has made the load design of the mounting system including fixation, the specific console configuration with corresponding load calculations will be a part of the standard project documentation.

### ORDERING:

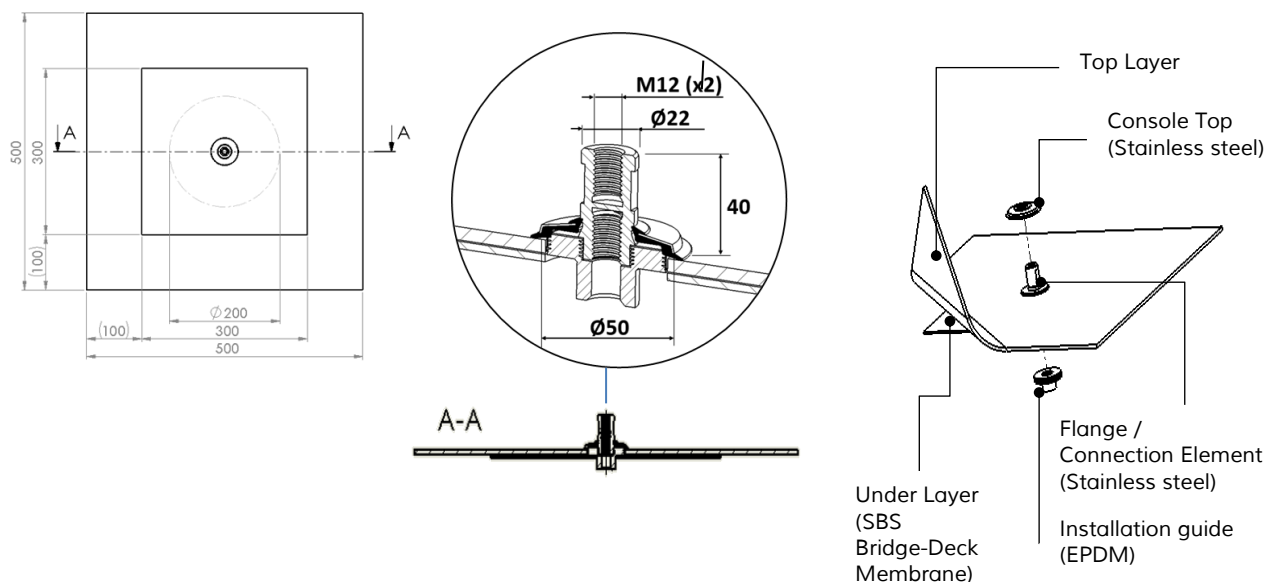
TYPE	ITEM
ROOF CONSOLE DIRECTFIX 2-LAYER	230062-1XX
Find the Membrane overview under "Downloads" on <a href="http://jualsolar.dk">jualsolar.dk</a>	

## ROOF CONSOLE DIRECTFIX 2-LAYER FROM JUAL SOLAR

### MATERIAL:

Flange:	Stainless steel
Console Top:	Stainless steel
Top Layer:	The type of the integrated top Layer can be specified for each individual project.
Under Layer:	SBS Bridge-Deck Membrane
Installation Guide:	EPDM

### TEKNICAL DATA:



### INSTALLATION:

#### GENERAL INSTALLATION GUIDELINES

The Roof Console DirectFix is designed with a stainless steel Flange with a centrally positioned Connection-element with 2 separated and concentric blind holes each with a M12 internal thread. The stainless steel Flange furthermore forms the contacting surface for the membrane integration of both the First –and the Top Layer membranes and the Console Top ensures that the Top membrane is effectively constrained at the center of the Console.

The Roof Console is always combined with a Console Anchor which is chosen on behalf of the specific roof construction for each project. When a new project is planned it is therefore necessary to make a choice of Console Anchor and to choose the right membrane type both in terms of color and material in order to ensure compliance to the roof covering as well as to possible roofer or building contractor requirements.



### ROOF CONSOLE DIRECTFIX 2-LAYER FROM JUAL SOLAR

---

For further information concerning anchor types for the DirectFix Roof Console please refer to the present application matrix or contact JUAL SOLAR.

#### APPLICATION

The Console DirectFix product has been made with the purpose of achieving an effective, safe and simple systematic solution for the fixation of fully covering solar installations on flat roofs where technical requirements have been set with the target of utilizing materials and resources in the most efficient way for this type of installations. The product has, as the present range of console products, also been developed in a close corporation with the roofing industry under consideration to the present industry guidelines and intentions.

#### INSTALLATION

The first step in the installation process of installing the Roof Console DirectFix is to install the chosen Console Anchor on to which the console is connected by engaging the Anchor into the internal M12 tread of the Connection element. When the console has been turned until it aligns smoothly with the surface of the roof, the console position is slightly adjusted until the intended membrane orientation relative to the roof is reached and the first membrane layer is hereafter fully welded and followed by the welding of the top layer. JUAL SOLAR recommends that Roof Consoles with a square formed membrane is oriented with one corner facing up against the inclination of the roof in order to ensure a smooth draining of the roof surface.

For further information about specific installation details please refer to the present installation guide lines.

Regarding the welding of roof membranes JUAL SOLAR recommends that this work is carried out by educated roofers who have been trained to work with the specific membrane at hand.