

Manual:

Cleaning

To enjoy your Joulia for a long time and for maximum efficiently, it is necessary to clean the drain from time to time.

Video and Download available at:



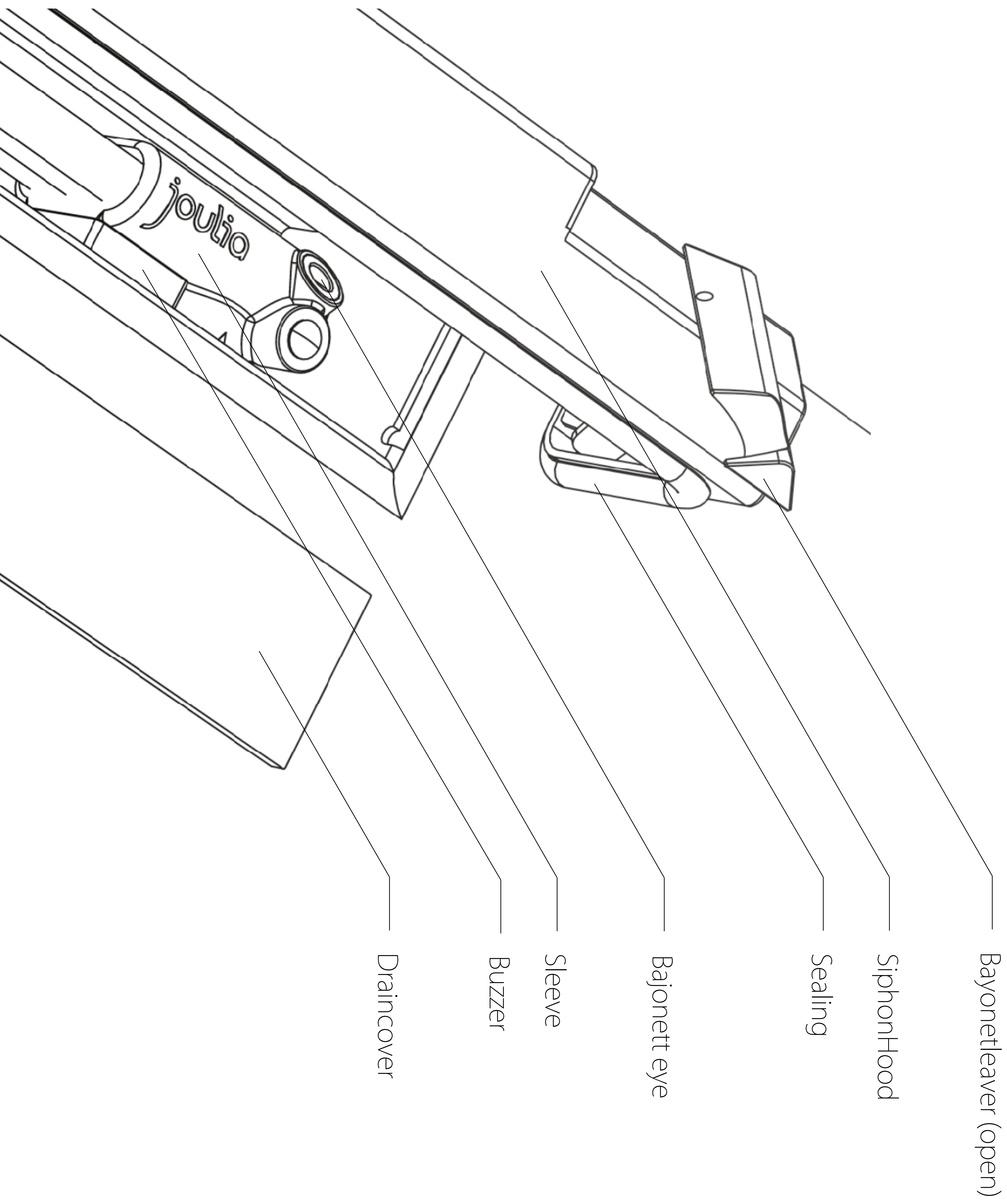
clean.joulia.com

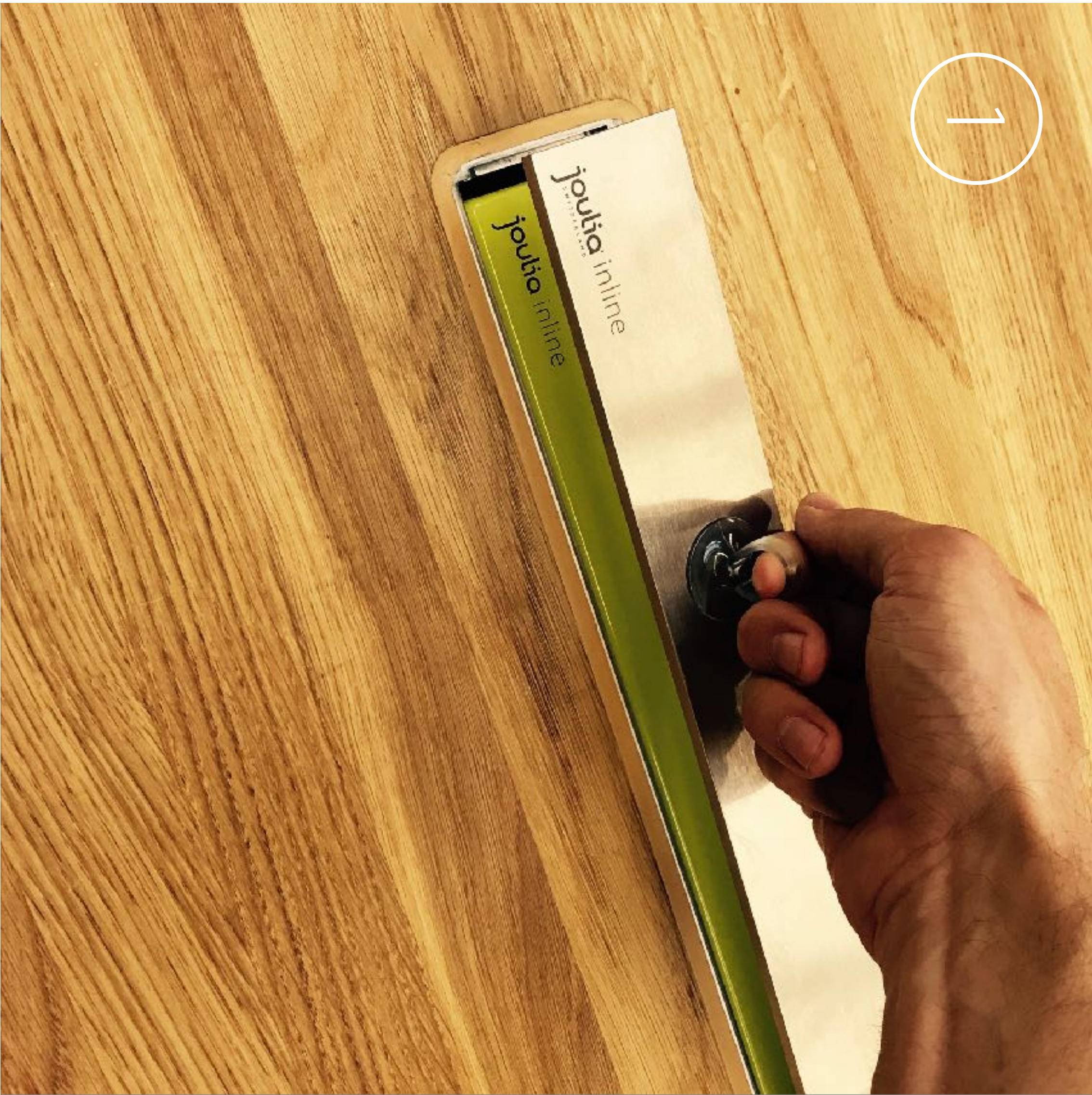
Cleaningnotes:

- Do not use aggressive or non-dilute cleaners.
- Always remove the SiphonHood for cleaning.
- Please test your Cleaner at a inconspicuous place .
- After cleaning, rinse with plenty of water.
- After the installation of the SiphonHood, fill the odor seal with water.

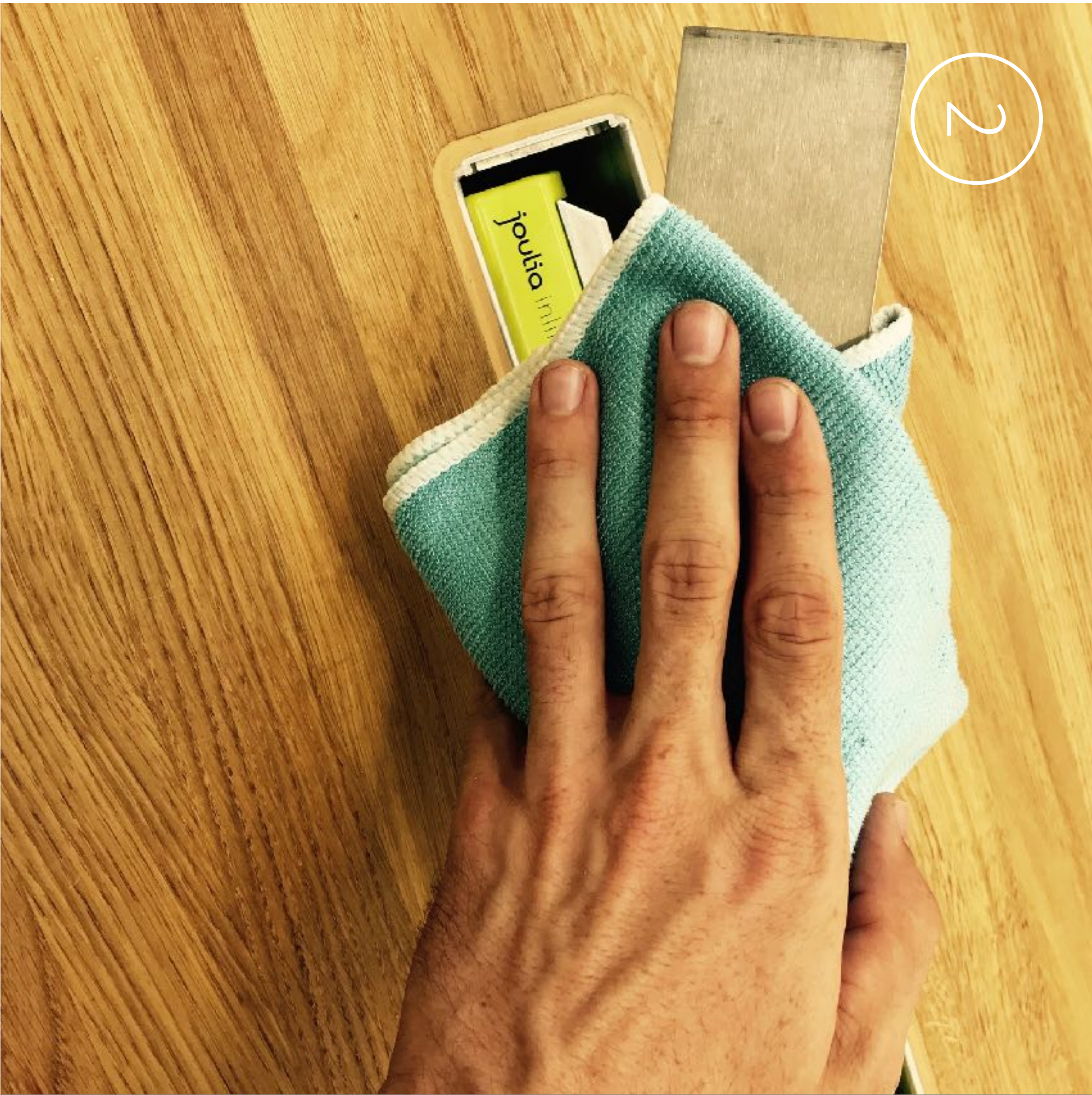
Attention: If siphon cleaner is used, the SiphonHood **MUST** be removed.

Designations:

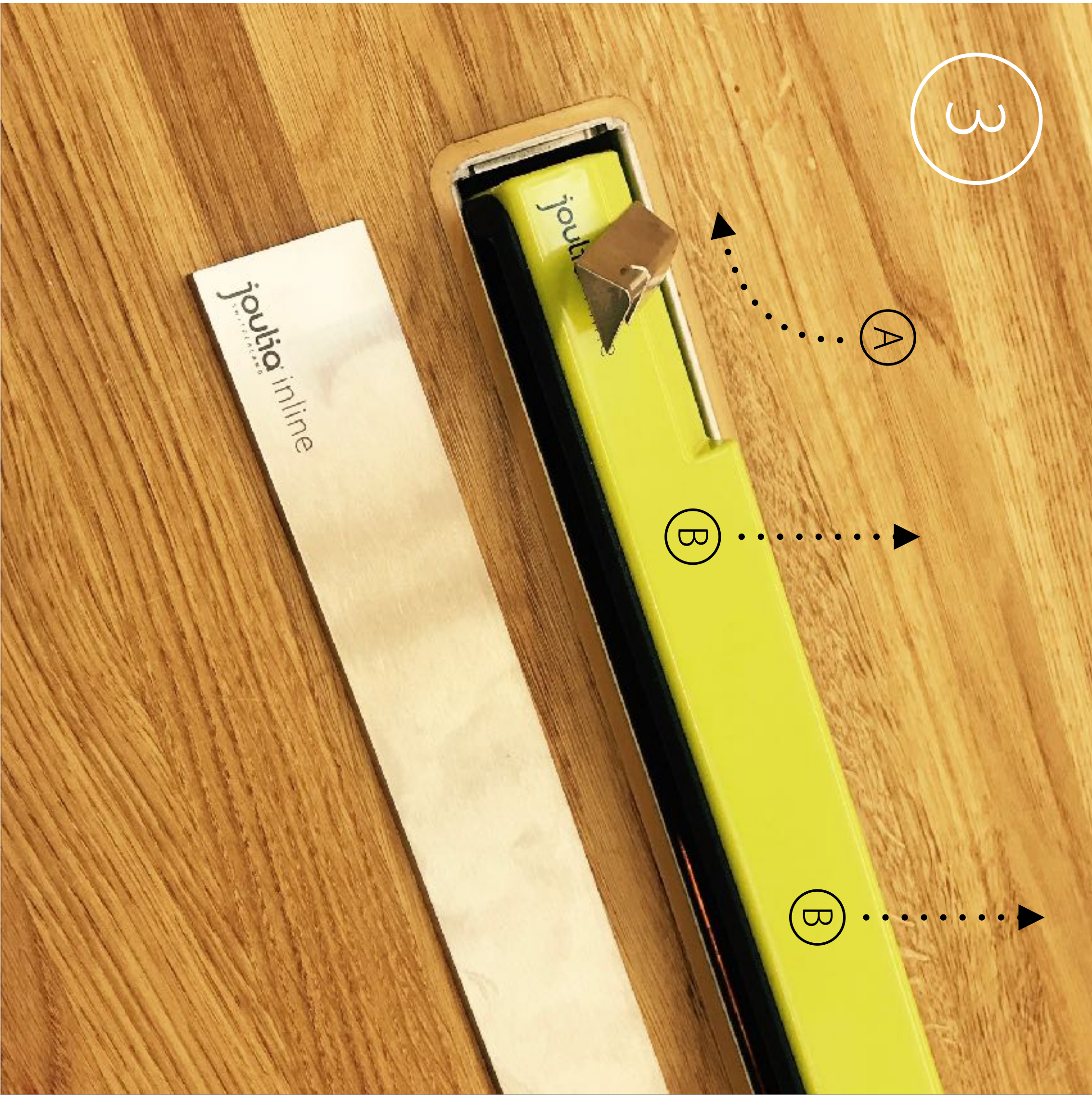




Remove the DrainCover with the delivered
Suctioncup.



Clean the Drain cover with a soft cloth.



Turn the two Handles together by 90° (A)
and Pull out the SiphonHood. (B)
Please ensure that the hood is lifted parallel
from the drain.



Flush the dirt with the Showerhead.



For dogged Dirt and Hairs you can use the delivered Brush.

With the Brush you can clean also Corners and the Sleeves of the Heatexchanger.



With the Brush you can also clean the SiphonHood.

Attention: Please do not apply any force during cleaning.



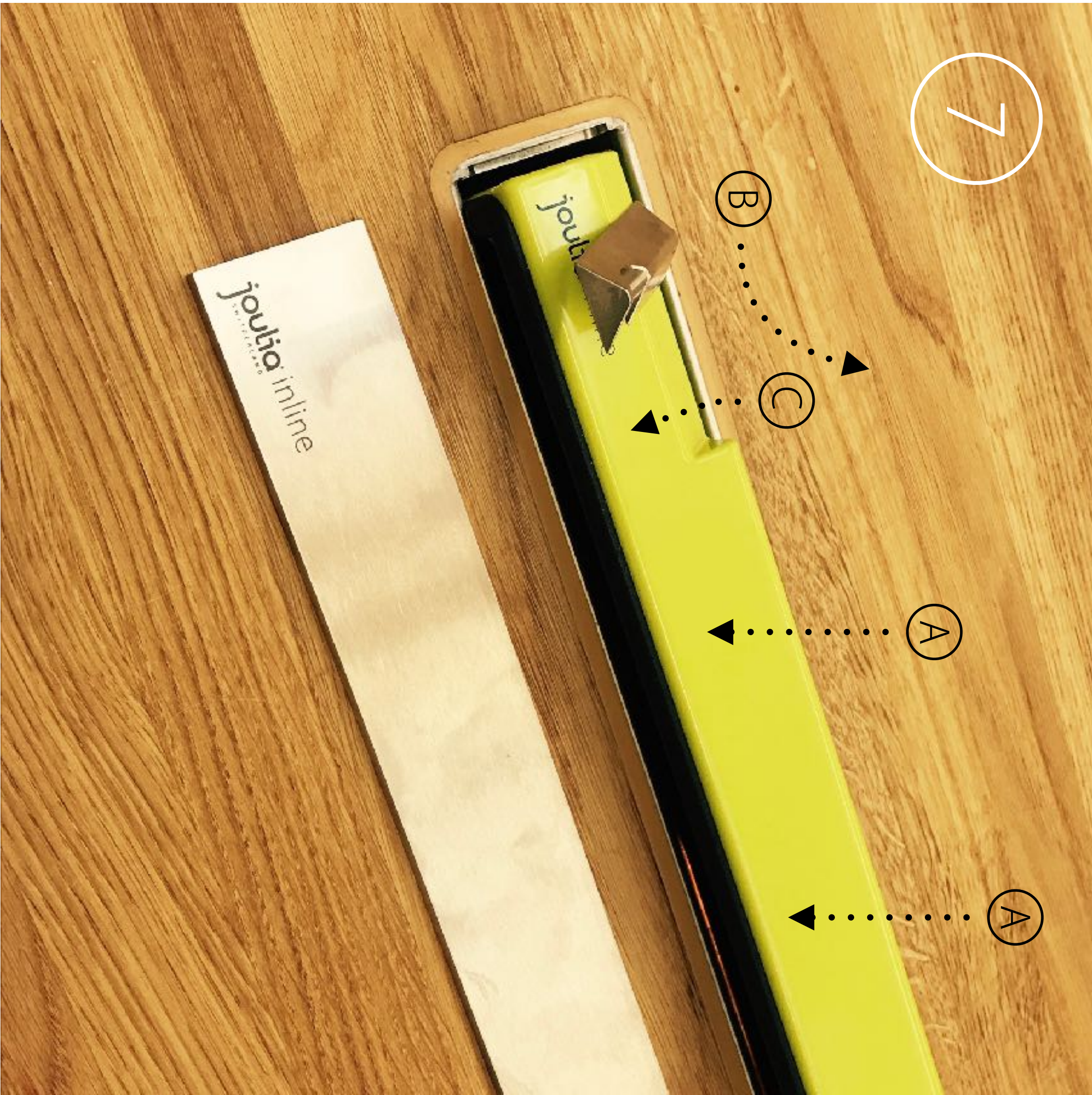
- Please clean the Sleeves careful.
- Make sure that the Buzzer stays in Position.

Buzzer: Our acoustical leakage detector.

buzzerjoulia.com



Attention: Please do not apply any force during cleaning.

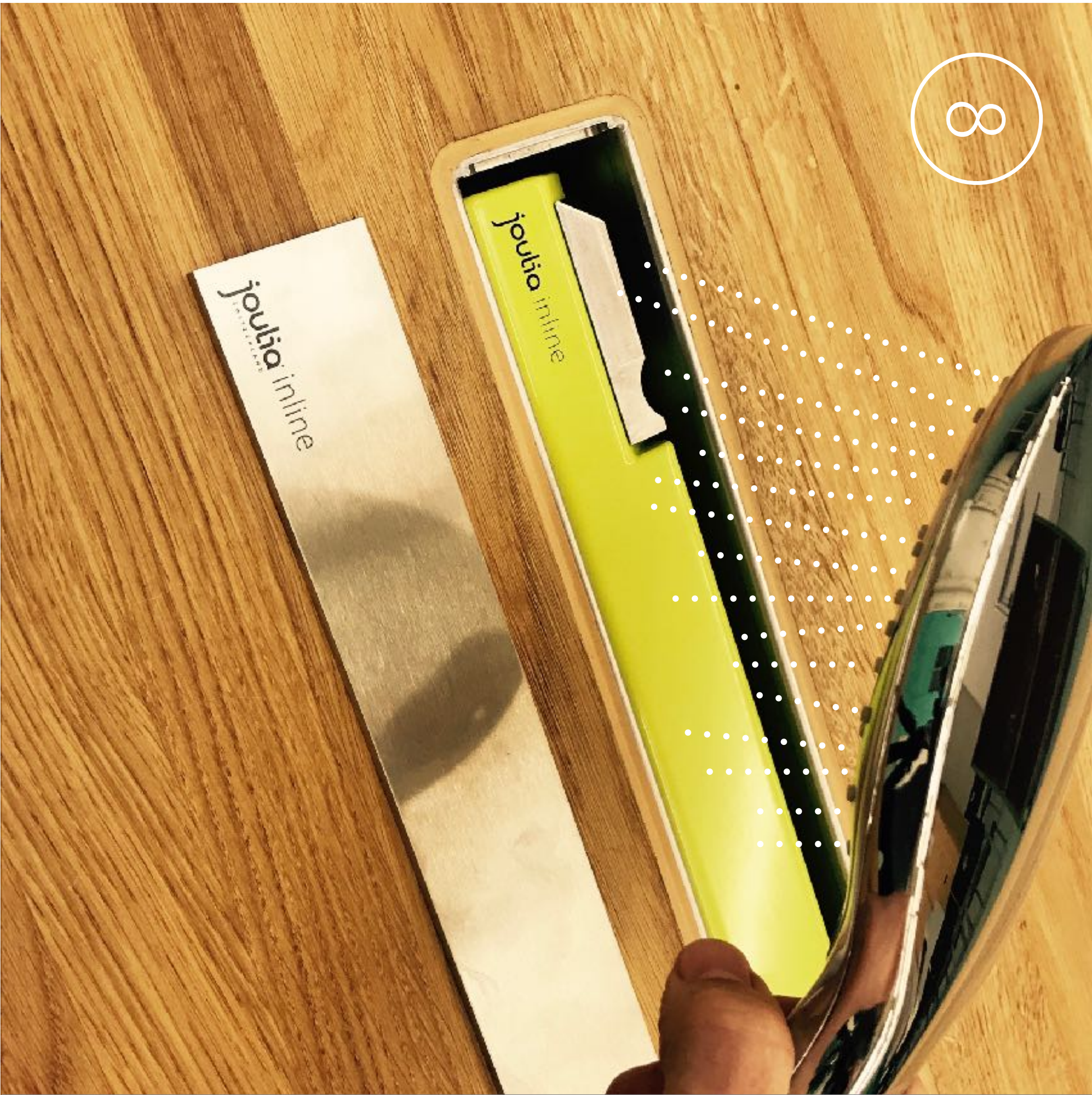


Lower the siphoning hood parallel into the gutter. (A) Make sure that the hood rests on the bayonet eye.

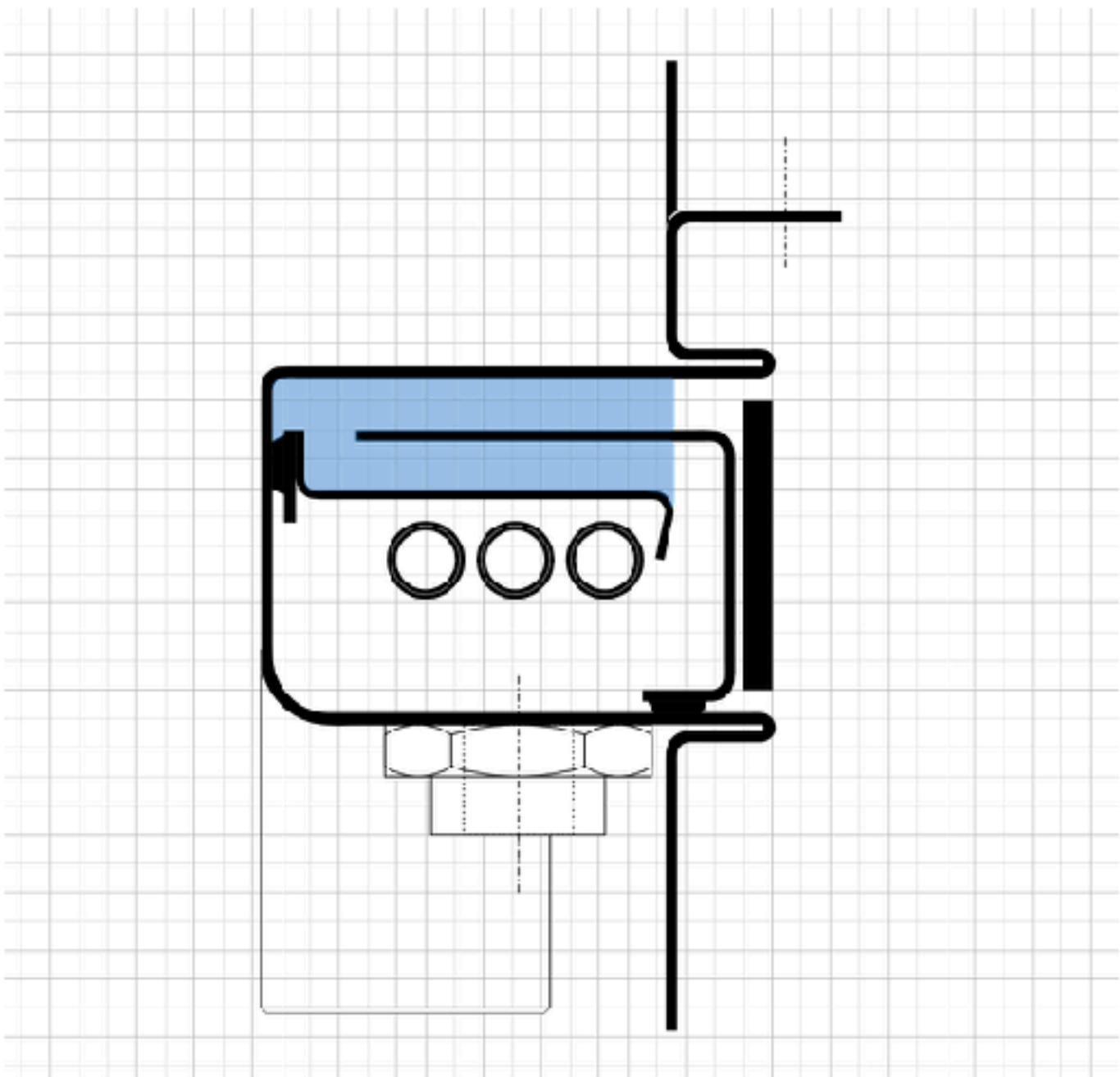
Now turn the two bayonet levers 90 ° to the starting position. (B) (C)

When installing the SiphonHood, make sure that it is tightly closed and is firmly locked in the channel.

Tip: The SiphonHood snaps in noticeably.



Fill the odor seal with water and close the Draincover.



We hope that your Joulia is now clean and wish
you lots of fun while saving energy!

If you have not been successful, please contact info@joulia.com

