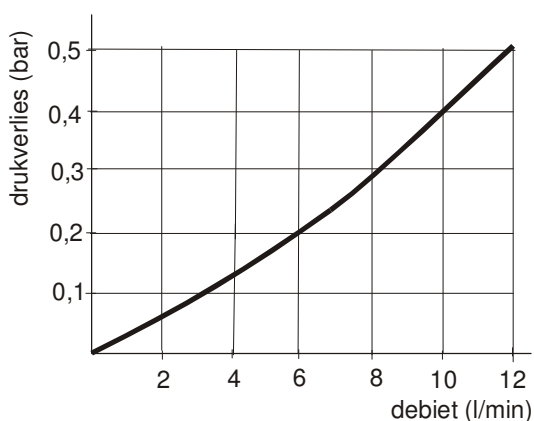


## Debiet en drukverlies Douche pijp, en Douchebak-wtw

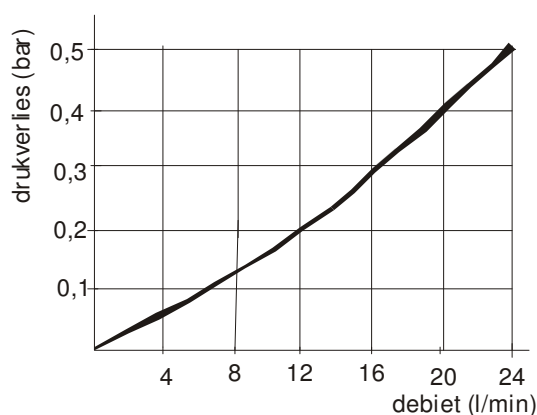
### Douche pijp-wtw

Watertoevoer: 12 liter / 50kPa  
Afvoer: 16 Liter / min



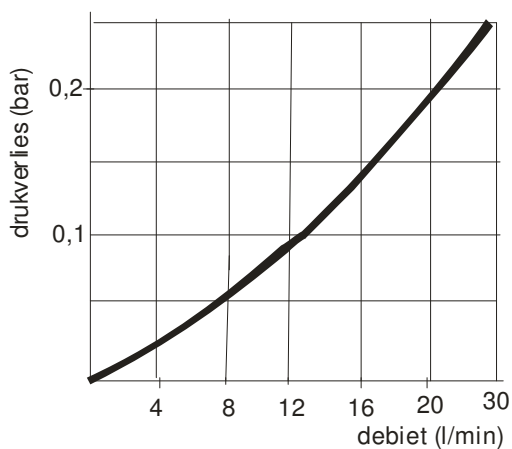
### Dubbele Douche pijp-wtw

Watertoevoer: 24 / 50kPa  
Afvoer: 32 Liter / min



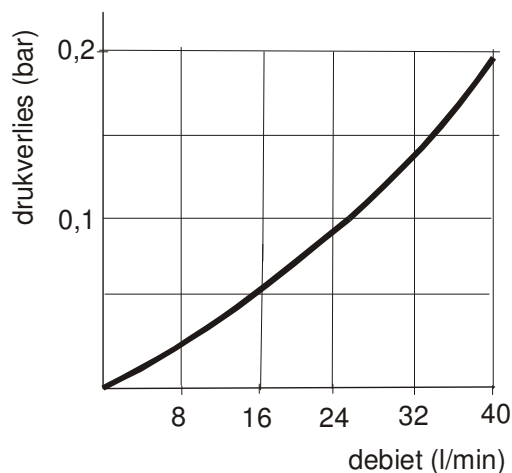
### Douche pijp-wtw Type-M

Watertoevoer: 20 liter / 20kPa  
Afvoer: 16L/min



### Dubbele Douche pijp-wtw type M

Watertoevoer: 40 liter 20kPa  
Afvoer: 32 Liter/min



### Douchebak-wtw

Watertoevoer: 12 liter / 50kPa  
Afvoer: 16L/min

